

CUSTOM & OPTIONS

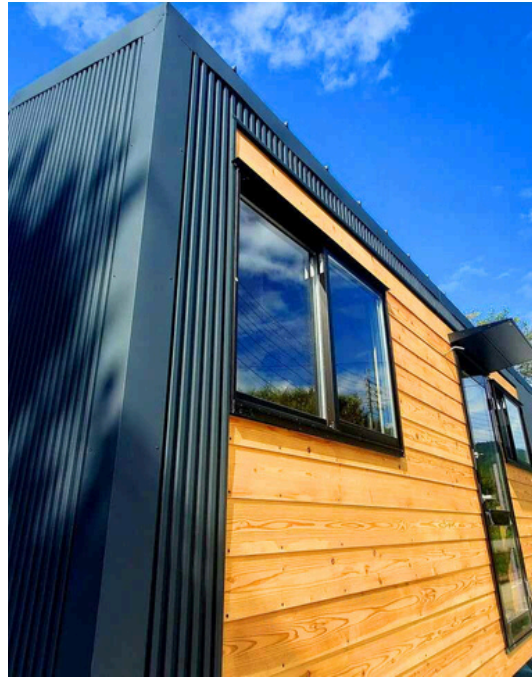




- 01** Our Process
 - 02** Colour Schemes
 - 03** Cladding
 - 04** Flooring
 - 05** Window
 - 06** Optional Upgrades
-

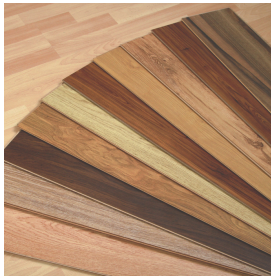
Design Your Dream Tiny Home

From colour schemes to custom finishes and optional upgrades, you have the freedom to create a home that's uniquely yours — stylish, comfortable, and perfectly suited to your lifestyle.



1. Choosing Your Colour Scheme

Pick from two palettes: light or dark. Your choice sets the tone for kitchens, bathrooms, walls, and storage, creating a unified look.



2. Customising Your Home

Select exterior cladding, house colour, flooring, and windows. Personalise your home to match your taste and lifestyle.



3. Adding Optional Features

Upgrade with add-ons for extra comfort and style. Choose from practical or luxury options to make your home truly yours.



Colour Schemes

LIGHT

The Light Colour Scheme creates a bright, airy, and welcoming atmosphere. A crisp white base enhances natural light, with white cabinetry and stainless steel fixtures in the kitchen, and clean white storage units throughout. Warm white and beige accents in the bathroom add a calming touch. Ideal for those who prefer a fresh, modern look with warmth.





Cabinet Doors

White with Gold Handles



White Paint

Frames and Shoe Shelves



Shower

Sand Beige

*Shower panel does not include a mirror



Stainless

Sink, Range hood, Stove top



Light Features

Blinds, Wall lights, Outlets

Colour Schemes



DARK

The Dark Colour Scheme offers a bold, contemporary look that pairs beautifully with natural wood and outdoor surroundings. Rich, deep tones create a sophisticated yet cozy atmosphere, with black cabinetry accented by gold in the kitchen and sleek, modern finishes in storage and bathroom areas. Perfect for those who enjoy a dramatic and refined aesthetic.





Cabinet Doors

Black with Gold Handles



Black Paint

Frames and Shoe Shelves



Shower

Black Line

*Shower panel does not include a mirror



Black Steel

Sink, Range hood, Stove top



Dark Features

Blinds, Wall lights, Outlets



CLADDING

Galvalume Steel for Roof &
Exterior

For the roof and exterior of your home, we have chosen Galvalume steel—a material renowned for its exceptional durability and sleek appearance.

■ What is Galvalume Steel?

Galvalume steel is a high-performance alloy-coated steel sheet composed of approximately 55% aluminum, 43% zinc, and 2% silicon. This unique blend creates a protective coating that significantly enhances corrosion resistance and longevity compared to traditional galvanized steel or tinplate.

■ Key Benefits

Outstanding Durability

Engineered to withstand harsh weather conditions such as rain, snow, and strong UV rays, Galvalume steel lasts several times longer than standard steel materials.

High Rust Resistance

The zinc offers sacrificial protection, while the aluminium forms a durable barrier that minimises rust and surface degradation over time.

Lightweight yet Strong

Lighter than most other materials, Galvalume reduces the structural load on buildings and contributes to improved earthquake resilience.

Modern Aesthetic

With its clean, contemporary look, Galvalume steel maintains its color and texture beautifully, ensuring your building stays visually appealing for years.

Low Maintenance

Its smooth surface resists dirt buildup, making it easy to maintain with minimal cleaning—ideal for long-term use.

■ A Trusted Choice for All Climates

Galvalume steel is widely adopted in architecture across Japan, especially in regions with heavy snowfall and high humidity. We selected this trusted material to provide our guests with a safe, comfortable, and long-lasting environment.



Nisku Colour PRO MATT

The heat-resistant coated products will have a "S"

The anti-contamination coated products will have a "C"

Nisku Colour PRO GH / GC



GHN23

S コグチャ

マンセル値：6.7YR 2.7/0.6
日射反射率：42%



GHG04

S モスグリーン

マンセル値：2.4G 2.9/1.1
日射反射率：43%



GHR25

S レッドブラウン

マンセル値：9.5R 3.0/4.0
日射反射率：45%



GHR38

S ブリックレッド

マンセル値：9.2R 3.3/5.0
日射反射率：46%



GHK01

S ブラック

マンセル値：5.0PB 2.3/0.4
日射反射率：41%



GHK02

S ブラックパール

マンセル値：5.3YR 2.9/0.2
日射反射率：43%



GHB10

S ダークブルー

マンセル値：10.0B 2.4/2.1
日射反射率：46%



GHA40

S ストーングレー

マンセル値：5.4Y 6.9/0.1
日射反射率：61%



GHY35

S オレンジ

マンセル値：6.0YR 5.0/6.8
日射反射率：49%



GHN22

S ブラウン

マンセル値：7.2YR 2.8/0.9
日射反射率：42%



GCM37

C マットシルバー

マンセル値：0.1B 6.1/0.4
日射反射率：56%



GCM16

S いぶし銀

マンセル値：3.9Y 3.1/0.4
日射反射率：41%



GCM36

C ペールゴールド

マンセル値：1.4Y 5.7/1.0
日射反射率：52%



GCA51

S マットグレー

マンセル値：2.3BG 5.3/0.4
日射反射率：53%



GCK50

S ファインブラック

マンセル値：4.8PB 2.1/0.5
日射反射率：43%



GCB53

S ディープブルー

マンセル値：6.2B 2.9/4.2
日射反射率：47%

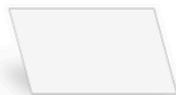


GCG55

S ロクショウ

マンセル値：2.0BG 5.5/3.7
日射反射率：56%

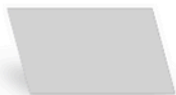
Nisku Colour PRO GC GLOSSY



GCW07

Cホワイト

マンセル値: 8.3G 8.9/0.3
日射反射率: 64%



GCM17

SCシルバー

マンセル値: 3.38G 6.4/0.1
日射反射率: 60%



GCM21

Sメタリックブラウン

マンセル値: 7.3YR 2.5/0.9
日射反射率: 42%



GCW12

Cウールホワイト

マンセル値: 3.8Y 8.7/0.6
日射反射率: 65%



GCA19

Sグレー

マンセル値: 2.6BG 5.7/0.5
日射反射率: 56%



GCG06

Sウグイス

マンセル値: 8.8GY 6.6/2.2
日射反射率: 60%



GCG03

Sグリーン

マンセル値: 5.5G 3.0/4.8
日射反射率: 43%



GCV14

Cアイボリーホワイト

マンセル値: 7.8Y 8.2/1.1
日射反射率: 59%



GCW08

Cサンドホワイト

マンセル値: 2.6GY 7.7/0.7
日射反射率: 62%



GCR24

Sレッド

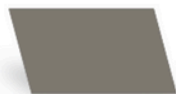
マンセル値: 0.7YR 2.7/8.5
日射反射率: 48%



GCB09

Sブルー

マンセル値: 4.9B 2.9/5.7
日射反射率: 43%



GCM26

Cシルバーブラウン

マンセル値: 0.7Y 4.4/1.0
日射反射率: 50%



GCG15

Cミントグリーン

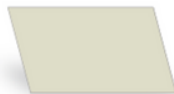
マンセル値: 2.9BG 6.0/1.7
日射反射率: 59%



GCA20

SCフリントグレー

マンセル値: 8.1YR 6.8/0.2
日射反射率: 61%



GCV13

Cクリームベージュ

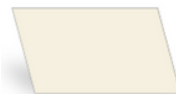
マンセル値: 0.4Y 7.5/1.1
日射反射率: 52%



GCM27

SCゴールド

マンセル値: 0.5Y 4.4/1.9
日射反射率: 50%



GCV11

Cアイボリー

マンセル値: 2.4Y 8.3/1.6
日射反射率: 67%

FLOORING

YKK AP N TOUGHTECT SERIES

N TOUGHTECT STANDARD



white



Clear



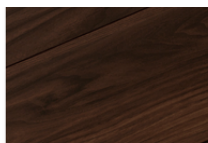
Calm Natural



Greige



Brown



dark



beige

N TOUGHTECT PATTERN + ¥15,000



Natural Collage



Beige Collage



Greige Collage

N TOUGHTECT TREND

+ ¥10,000



Chalked Oak



Powdery Maple



Bright Pecan



Vintage Oak



Smoky Oak



Grand Walnut



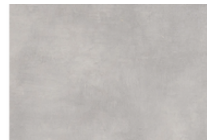
Wild Cherry

N TOUGHTECT WATER RESISTANT

+ ¥15,000



Frost Marble



Thick Mortar



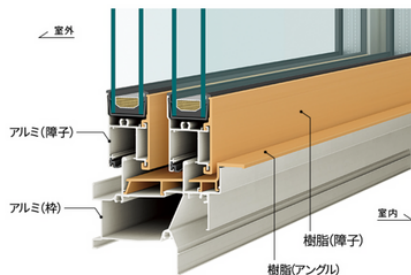
Nature Served

Double- Glazed WINDOW

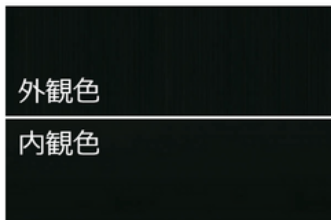
Episode II NEO

Aluminum-resin composite window

Excellent thermal insulation structure. By adding the benefits of resin, which has excellent insulating and moisture-proofing properties, to the interior side of the window, high insulating performance is achieved. This protects the area around the window from the effects of outside temperatures and maintains a healthy indoor environment.



white



Calm Black



Visit our Showroom Village
to explore display models.

Book an Appointment
contact@ikigai.co.jp

5468-1, Mizuho, Iiyama City, Nagano,
Japan 389-2322





Optional Upgrades

Optional Upgrades for Your Tiny Home

Make your tiny home uniquely yours with a range of optional upgrades designed for both style and comfort. From elegant finishes to smart living solutions, you can create a space that perfectly fits your lifestyle.

Shower Room

Mizuho Model Only

Enhance both style and comfort with our upgraded shower room designs.

Door



Swing door tempered glass (Black)
+ **¥65,000**



Swing door tempered glass (Silver)
+ **¥65,000**

Rain Head Shower



Swing door tempered glass (Black)
+ **¥60,000**



Swing door tempered glass (Silver)
+ **¥60,000**

Compost Toilet

Nature's Head Composting Toilet, Spider Handle

A composting toilet is an eco-friendly, waterless system that uses natural decomposition and ventilation to turn waste into safe compost.

+ ¥150,000



Incineration Toilet

Cinderella Comfort Toilet

The Cinderella Comfort is a premium waterless incineration toilet designed for convenience, hygiene, and sustainability. Instead of using water, it hygienically incinerates waste into a small amount of sterile ash, eliminating odors and reducing maintenance. With its modern design, user-friendly controls, and eco-friendly performance, it provides a clean and comfortable solution ideal for locations without traditional plumbing.

+ ¥750,000



Cinderella[®]
Incineration Toilets

Awning

YKKAP Modern Style

Aluminum Awning – Modern Function & Design

Crafted from durable aluminum, this awning offers excellent sunshade and rain protection, while its simple, streamlined form adds a stylish accent to your home's exterior. Engineered for reliability, it is snowfall-resistant up to 50 cm, ensuring year-round comfort and peace of mind even in harsh winter conditions.

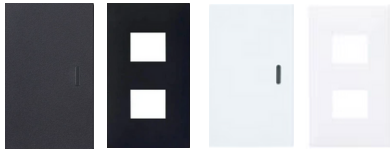
+ ¥60,000



*The colour of the window frames will determine the colour of the Awning.

Outlet Covers

Panasonic Advanced Series for modern looks.



+ ¥35,000

*The colour of the covers will be determined by the color scheme.

Blinds

Class 1 Shading Blinds (Tension-Mounted Type)

This ensures excellent control over sunlight, while protecting privacy. The tension-mounted design means no drilling or permanent fixtures are required.

+ ¥90,000

*The colour of the blinds will be determined by the colour scheme.



Underfloor heating

Heat Plus

HeatPlus Underfloor heating

Heatplus Underfloor Heating is a modern, energy-efficient heating system from Korea that's becoming popular in Japan. It uses far-infrared carbon film technology installed beneath the floor surface to evenly distribute warmth throughout the room. Unlike traditional heaters, Heatplus provides silent, dust-free, and consistent heat, making it ideal for Japan's cold winters and perfect for cozy, minimalist homes like tiny houses.



+ ¥350,000



Insurance

Insurance Coverage Overview

This insurance plan provides financial protection against unexpected accidents and disasters. Below is a summary of coverage categories, details, and applicable conditions.

For personalised assistance and further details, we can recommend a trusted insurance agent to guide you through your options.

Overview of Insurance Payments

The insurance will provide compensation for the following incidents selected at the time of your contract:

1. **Fire, lightning, and explosion**
2. **Windstorm, hail, or snow damage (Note 1, Note 2)**
3. **Water damage (Note 3)**
4. **Electrical or mechanical accidents**
5. **Collision, crash, or contact with vehicles or aircraft; water damage; riot**
6. **Falling or flying objects from outside the building, theft**
7. **Unforeseen and accidental incidents other than (1) through (6)**

Notes:

1. For damages caused by wind, rain, snow, hail, dust, or similar events blowing inside, coverage is limited to cases where the exterior of the building or outdoor equipment/facilities was damaged by windstorm, hail, or snow and the interior was affected through the damaged section.
2. For payment of insurance benefits, if multiple snow-related damages occur in one snowfall season, and it is not clearly verifiable that they were caused by separate incidents based on the General Policy Provisions, such damages are deemed to have occurred from a single incident.
3. For contracts with the Limited Water Damage Coverage Rider, please refer to Important Notes Regarding Contracts with Limited Water Damage Coverage for payment methods.

Property Damage Compensation Provisions

■ Debris Removal Expenses

When insurance benefits are paid for incidents (1) through (7).

Expense Insurance

■ Repair-Related Expenses

If a fire, explosion, or rupture originating from the insured property or its storage building causes damage to another person's property (excluding smoke damage and odour adhesion damage).

■ Consolation Money for Fire Damage

If a fire, explosion, or rupture originating from the insured property or its storage building causes damage to another person's property (excluding smoke damage and odour adhesion damage).

■ Earthquake Fire Expenses

If a fire occurs as a result of an earthquake, volcanic eruption, or subsequent tsunami (hereinafter referred to as "earthquake, etc."), provided that the loss is not caused after the insured property has already been completely destroyed due to the earthquake, etc.:

1. If the insured property is a building, when the building is half-burned or more.
2. If the insured property is movable property, when the building housing the movable property is half-burned or more.

Note: "Half-burned" refers to when the loss amount of fire damage to the main structural parts of the building is at least 20% of the replacement value of the building, or when the burned floor area is at least 20% of the total floor area of the building.

■ Loss Prevention Expenses

If necessary or beneficial expenses are incurred to prevent the occurrence or spread of loss in the event of incident (1).



Custom & Options



Ikigai Collective G.K.
5468-1, Mizuho, Iiyama City,
Nagano, Japan 389-2322
TEL: 080-3092-0388
EMAIL: contacti@ikigaico.jp

